

DIY

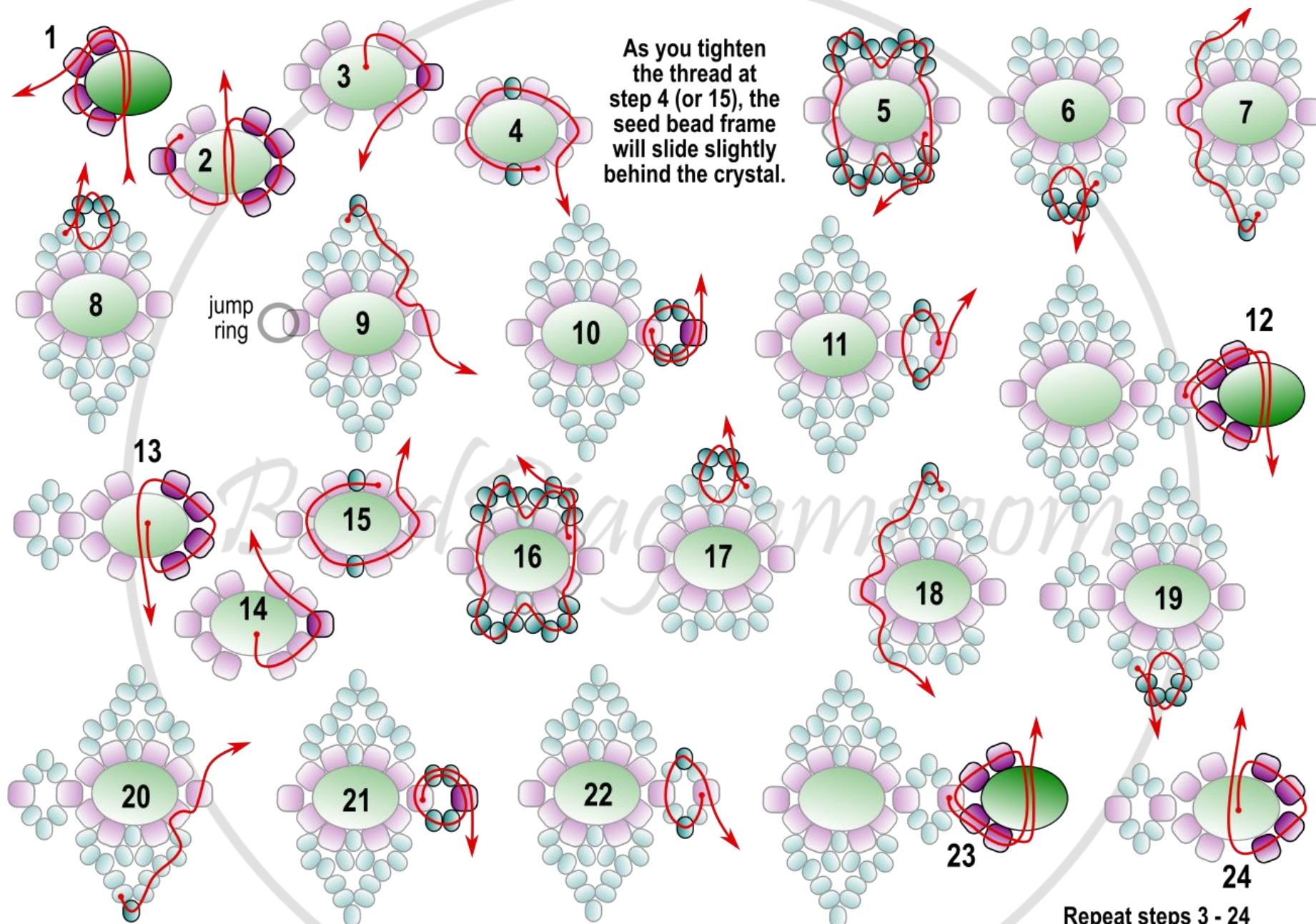
Imperial Bracelet



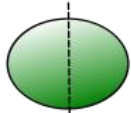
BeadDiagrams.com



Imperial Bracelet



Materials:



6x8mm
Rondelle
Crystals



11/0 TOHO
seed beads



6/0 TOHO
seed beads



Jump rings
to connect
clasp

Repeat steps 3 - 24
to desired length.
End on step 9 or 20.
Put jump rings through the 6/0
at either end to connect clasp.